

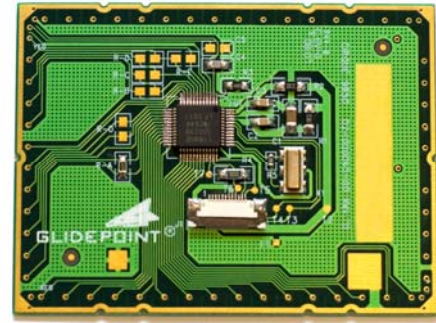
TSM9950 Touchpad



Our TSM9950 is an ultra thin module designed for use as an embedded PS/2® input device. Its dimensions are based upon the industry standard for the notebook computer pointing devices, making it ideal for integration into a wide variety of products where space is a constraint and a thin profile is required.. We also offer custom overlays to match your design requirements.

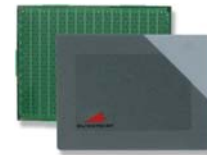
applications

- Keyboards
- Keypads
- Mouse alternatives
- Industrial control panels
- Medical instruments
- PC peripherals
- Point-of-sale devices
- Laptops



features

- Industry-standard notebook computer size
- Ultra thin profile
- PS/2 (12-pin FFC connector) compatibility
- Low power consumption
- Easy product integration due to thin, lightweight design
- No maintenance required – Sealable design is immune to moisture, dust and abuse
- Superior navigation and high responsiveness
- Windows®-compatible embedded features mean no additional drivers needed

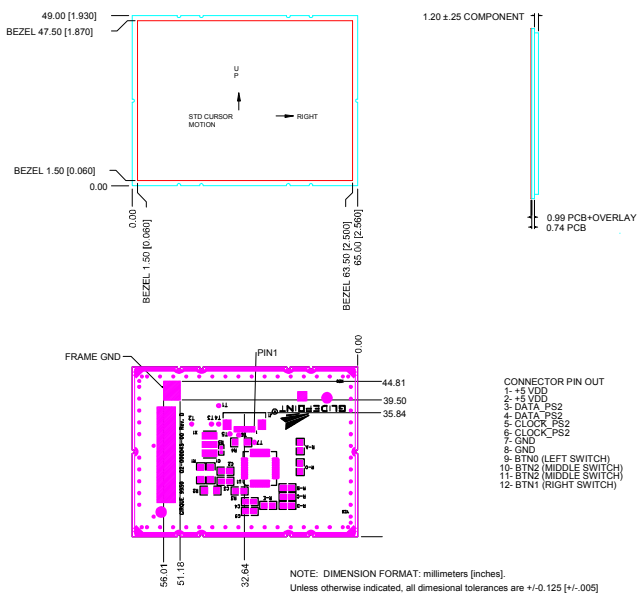


Using our patented GlidePoint® technology, the TSM9950 is immune to moisture, allowing it to function properly even with water droplets present on the touchpad's sensing surface. Power efficiency of any application is improved with an "idle mode," where the touchpad's current draw is reduced when a finger is not touching its surface.

The TSM9950 is fully compatible with standard Windows® mouse drivers. No additional driver is required to activate many of its advanced features. Configurable options on the module allow for taps (function as left-button clicks), corner-taps (function as right-button clicks), vertical scroll (functions as mouse scroll wheel) and more, depending on the specific application. For applications requiring greater flexibility, Cirque offers a Windows® driver, which allows users to enable and disable advanced features, personalize settings and reprogram buttons.

For custom functionality at the product design stage, we offer software that allows OEMs to enable, disable or personalize advanced settings and/or reprogram the touch sensitive area.

Interface	PS/2 with 12-pin FFC connector
Operating Systems	Microsoft Windows® 95 and later Cirque Driver available for Windows® 95, 98, ME, NT 4.0, 2000, XP*, and Vista* (*Supported in current driver version)
Button Support	Three (3) mechanical buttons
Sensor Overlay	Multiple options available
Physical Parameters	
Width	65.00 mm ± 0.15
Height	49.00 mm ± 0.15
Thickness	2.19 mm ± 0.25 mm with all components
Weight	< 14 g
Active Sensing Area	62.00 x 46.00 mm ± 0.15 mm
Voltage	5v ± 10%
Current	6.6 mA (active) 2.6 mA (idle)
Operating Temperature	0° to 60° Celsius
Operating Humidity	5% to 100% relative humidity (condensing)
Storage Temperature	-40° to +65° Celsius
ESD	15 kV when properly mounted in bezel
Environmental	EMI tolerant and manufactured RoHS compliant
Available Accessories	Mounting bracket – part no. PK20-M



Our knowledgeable and helpful sales team is ready to answer all of your question. Please call toll-free 1-800-GLIDE-75 or visit www.cirque.com



CIRQUE CORPORATION

Input Solutions At Your Fingertips
© 2006-2009 TSM9950 Rev. A

2463 South 3850 West, Suite A, Salt Lake City, Utah 84120 U.S.A.
Phone: (801) 467-1100 • Fax: (801) 467-0208 • www.cirque.com