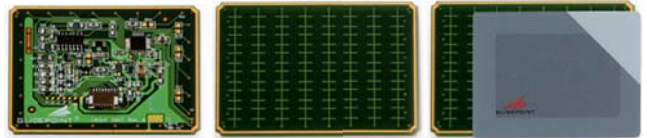


## ► TM3957 Touchpad

Our TM3957 touchpad is designed for use as low power embedded PS/2® input device. It is similar in specification to the TM9957, but its voltage and current specifications are improved to significantly. Its dimensions are based upon the industry standard for notebook computer pointing devices, making it ideal for integration into a wide variety of products where space is constrained. We also offer custom overlays to match your design requirements.



### APPLICATIONS

- Wireless keyboards
- Remote controls
- Digital lifestyle players
- Industrial control panels
- Medical instruments
- Portable instrumentation
- Laptops

### FEATURES

- Industry-standard notebook computer size
- PS/2 (8-pin FFC connector) compatibility
- Voltage: 3v +/- 10%
- Low power consumption with advanced power management
- Easy product integration due to thin, lightweight design
- No maintenance required – Sealable design is immune to moisture, dust and abuse
- Superior navigation and high responsiveness
- Windows®-compatible embedded features mean no additional drivers needed

Using our patented GlidePoint® technology, the touchpad is immune to moisture, allowing it to function properly even with water droplets present on the sensor surface.

In battery operated environments, the TSM3957's power consumption is reduced with an active power management system, which automatically adjusts to user actions – automatic management of idle, sleep and shutdown modes.

The touchpad is fully compatible with standard Windows® mouse drivers. No additional driver is required to activate many of its advanced features. Hardware-configurable options on the module allow for taps (function as left-button clicks), corner-taps (function as right-button clicks), vertical scroll (functions as mouse scroll wheel) and more, depending on the specific application.

TM3957	
Interface	PS/2 with 8-pin FFC connector
Operating Systems	Microsoft Windows® Cirque Drivers available for Microsoft Windows® XP and Vista
Button Support	Three (3) mechanical buttons
Sensor Overlay	Standard - part no. 50-49-00)
Physical Parameters	Length: 65.02 Width: 49.02 Thickness: 5.00 mm with all components Weight: < 14 g
Active Sensing Area	62.50 x 46.50 mm
Voltage	3v +/- 15%
Current	3.0 mA (active) 2.0 mA (idle) 50 uA (sleep) 10 uA (shutdown)
Operating Temperature	-40 to 85° Celsius
Operating Humidity	5% to 95% relative humidity (non-condensing)
Storage Temperature	-55 to 150° Celsius
ESD	15kV when properly mounted in bezel
Environmental	EMI tolerant and manufactured RoHS compliant
Available Accessories:	8-pin FFC cable available upon request Mounting bracket: part no. PK20-M