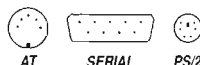


SMOOTH CATTM USER'S GUIDE

Hardware Requirements:

The Cirque Smooth Cat requires a PC-compatible computer.



Software Requirements:

The Cirque Smooth Cat software requires Windows® 95/98 or NT® 4.0.

Windows 95/98 touchpad and keyboard Installation:

- 1) Turn the power to your computer off.
- 2) Smooth Cat requires two computer ports, one for the keyboard and one for the touchpad.
For the keyboard: attach the round PS/2 connector (or use the PS/2-to-AT adapter) to your computer's keyboard port. For the touchpad: disconnect the mouse cable and attach the rectangular serial connector (or use the serial-PS/2 adapter) to your computer's mouseport. Because the PS/2 ports for both touchpad and keyboard may appear identical, look for an icon or description next to each port on your computer to identify which to use. Be careful not to switch the cables. A helpful diagram follows on page 2.
- 3) Turn the computer on and start Windows. If you see the "New Hardware Found" dialog box after booting your computer, select **CANCEL** and continue with the next step...
- 4) Test the keyboard's keys and touchpad; each should operate with your existing drivers.
- 5) Insert the Cirque Driver & Utilities Disk.
- 6) Click on the Windows **START** button, select **SETTINGS** and then **CONTROL PANEL**.
- 7) From the Control Panel, open **ADD/REMOVE PROGRAMS** and click on **INSTALL**.
Follow the prompts as they appear on your screen (press Enter to select default options).

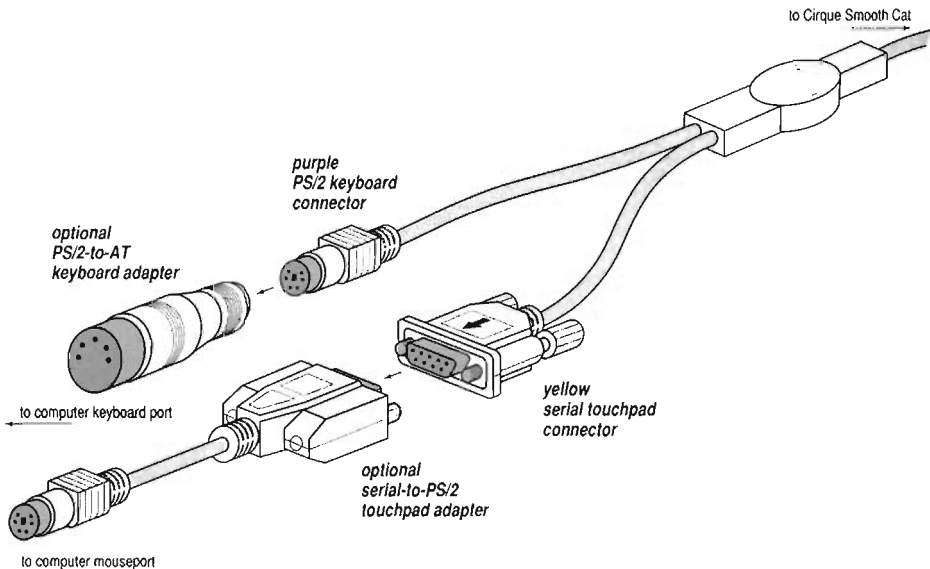
Windows NT 4.0 touchpad Installation:

IMPORTANT! Install Cirque's software driver prior to installing hardware with NT.

- 1) Insert the Cirque's Driver & Utilities Disk.
- 2) Click on Windows **START** button, select **SETTINGS** and then **CONTROL PANEL**.
- 3) From the Control Panel, open **ADD/REMOVE PROGRAMS** and select **INSTALL**.
Follow the prompts as they appear on your screen (press Enter to select default options).
- 4) Shut down your computer.
- 5) Now install the Smooth Cat keyboard and touchpad. Your Smooth Cat requires two

computer ports, one for the keyboard and one for the touchpad. For the keyboard: attach the round PS/2 connector (or use the PS/2-to-AT adapter) to your computer's keyboard port. For the touchpad: disconnect the mouse cable and attach the rectangular serial connector (or use the serial-PS/2 adapter) to your computer's mouseport. Because the PS/2 ports for both touchpad and keyboard may appear identical, look for an icon or description next to each port on your computer to identify which to use. Be careful not to switch the cables. A helpful diagram follows.

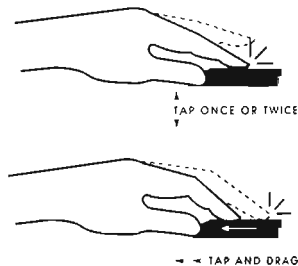
6) Turn the computer on and start Windows.



Using Cirque's standard touchpad features:

We recommend using the Cirque Tutorial for learning to use basic functions of the touchpad such as tapping, dragging, and gliding (select **START**, **PROGRAMS**, **CIRQUE SOFTWARE**, and then **TOUCHPAD TUTORIAL**).

Unlike the mouse or trackball, Cirque touchpads with GlidePoint® Control require little arm and wrist motion and no pressure, lowering the risk of repetitive stress. Like all pointing devices, your touchpad may take a short time to get used to. You will soon find that using your finger is a more natural and intuitive way to control your computer. Simply glide your finger across the surface of the pad to move the cursor and tap your finger to "click." It's easy!



Hand positioning suggestions:

We recommend a relaxed position with your pointer finger extended (you should use whichever finger is comfortable for you). Do not arch your hand, flex your fingers or hold your fingers in the air – this causes unnecessary strain on the hand and wrist.

Learning to tap on the touchpad:

Click, double-click, drag and highlight functions of the primary (left-click) and secondary (right-click) mouse buttons can be activated by tapping directly on the surface of the pad.

Remember to use a light, quick tap.

- To click, lightly and quickly tap the touchpad once.
- To double-click, rapidly tap on the pad twice. Remember, the touchpad responds best to a very light, crisp tap.
- To right-click in Windows applications, tap the upper right corner of the touchpad.
- To drag, draw, or highlight, double-tap rapidly and hold your finger down on the second tap, then glide to move.
- To drag further than the touchpad surface, simply lift and reposition your finger after reaching the pad's textured edge.
- Cirque's Control Panel allows custom settings for your own tapping speed and style.

Using your keyboard:

Flexing your hands, wrists and arms in repetitive motions as well as awkward body positions may lead to painful symptoms of repetitive stress. To help reduce your risk of computing-related injury, remember to take frequent breaks from typing and using the pointing device.

More helpful hints:

- ☞ Exercise during breaks to increase blood flow and relieve muscles, tendons, nerves, joints.
- ☞ Maintain a level wrist position during keyboard use.
- ☞ Avoid resting on your wrists while typing.
- ☞ Use a light touch.

Customizing:

Your touchpad may be personalized by accessing the **MOUSE** icon in the Control Panel. For details on each custom option available, select **START, PROGRAMS, CIRQUE SOFTWARE**, and then **GLIDE HELP** to access Cirque's interactive help file.



Learning to Scroll, Zoom and Surf on the touchpad

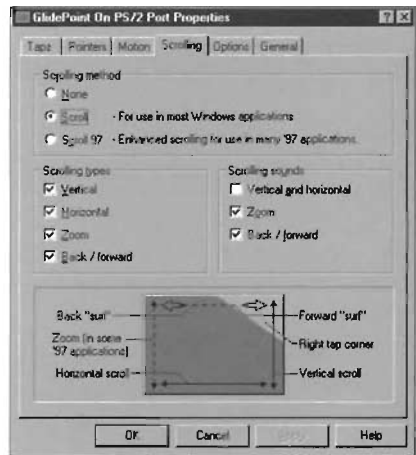
Your touchpad and software allow efficient and effortless navigation in Windows environments:

- Vertical and horizontal scroll bars
- Zoom option in '97-compatible applications
- Internet surf back/fwd navigation bar to activate back/fwd controls of popular browsers

Scrolling:

The scrolling feature allows you to maneuver through documents without navigating to the screen's scroll tools.

- To scroll vertically (with the cursor in the active window), lift and place your finger on the right edge of the touchpad, then glide your finger up or down.
- To scroll horizontally (with the cursor in the active window), lift and place your finger on the lower edge of the touchpad (avoid the corners), then glide your finger left or right.



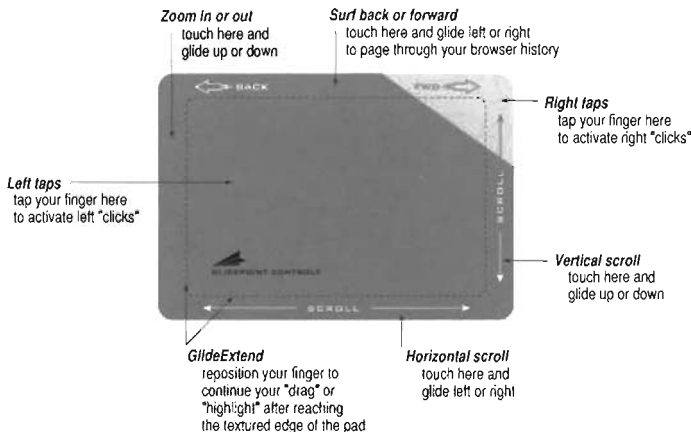
There are two types of scroll options in the **SCROLLING** section of the Cirque Control Panel.

- **SCROLL** permits scrolling in most Windows applications, zooming in advanced '97-style applications, as well as back and forward functions used in Netscape® Communicator and Microsoft® Internet Explorer 4.0.
- **SCROLL 97** allows smoother vertical scrolling in advanced '97-style applications such as Microsoft® Office 97, Corel® WordPerfect® Suite 8, Lotus® Word Pro 97 and other wheel-mouse compatible applications.

You can quickly toggle between SCROLL and SCROLL 97 options while working in your applications by holding down the CTRL key as you scroll.**

**Important notes to keep in mind as you learn to scroll in different applications:

- 1) For non-'97 applications, select the SCROLL option in the Cirque Control Panel.
- 2) If your application will not scroll using either SCROLL or SCROLL 97, then that application does not follow standard Windows scrolling conventions and will not be compatible.



Zooming

The zooming feature is available in advanced '97 applications. This allows you to increase or decrease the view size of your document.

- To zoom in or out, place the cursor in the desired active window, lift and place your finger in the zoom area (right touchpad edge) and glide your finger up or down.

Surfing Back and Forward

You can use Cirque's back/forward feature to activate the back and forward controls of various applications such as Microsoft Internet Explorer and Netscape Navigator.

- To surf back or forward on the web, lift and place your finger on the upper edge of the touchpad and glide your finger left or right. Each approximate 1/8-inch movement will activate a web page change.

Additional keys on the Smooth Cat keyboard:

Several keys have been added to Smooth Cat's natural layout, including extra editing keys and Windows operating system keys.

- The **WINDOWS** keys, located to the left and right of the keyboard's space bar and labeled with Microsoft's Windows logo, interface with Windows operating systems. Both WIN keys carry the same function and are used in combinations with other keys (e.g., SHIFT, ALT and CTRL).
- The **APPLICATION** key, located below the right SHIFT key and labeled with a cursor and pop-up box, will activate a "right click" to bring up a context menu (a list of options available for the selected object). Using this key will not effect the cursor's position. Other functions depend on your software; see your Microsoft Windows manual for further information.



- The **MOUSE** key, located in the center of the keyboard above the Space Bar, will turn the numeric keypad into a "virtual mouse," also called MouseKeys. To activate MouseKeys, go to **START**, **SETTINGS**, and then **CONTROL PANEL**. Open the **ACCESSIBILITY OPTIONS** icon. From the **MOUSE** tab, select Use MouseKeys and click **OK**. Once activated, this key lets you move your cursor up, down, left, right or diagonally by touching the numeric arrow keys.

- The **ARROW** key, located in the top right corner of the keyboard, is disabled on PC-compatible keyboards.

Troubleshooting:

The Cirque Smooth Cat should work right away when connected to your computer.

If you have trouble:

- ✓ Check all connections to your computer to be sure they are secured to the correct ports (refer to page 2), then restart the computer.
- ✓ Check the following list to see if your question can be easily answered. Should you need additional help, check our Internet Support Site at www.cirque.com.

Using multiple pointing devices with Windows 95/98 or NT 4.0?

Cirque's native Windows 95/98 and NT 4.0 driver software is designed to accommodate multiple pointing devices. Please note the following when attaching another device:

- ✓ The Cirque software is designed to operate with pointing devices that are 100% Microsoft mouse compatible. This may exclude some types of three-button mice, trackballs or pointing devices that use proprietary software.
- ✓ The Cirque software is designed to operate with pointing devices connected to separate ports; splitters and dual mouse adapters are not supported.
- ✓ To detect newly connected pointing devices, Cirque's software must be reinstalled.

Portable computers with built-in pointing devices?

The Cirque Smooth Cat and software should work right away when installed on your portable computer. If your touchpad does not work or fails to work after restarting the portable:

- ✓ Consult your portable's manual. Most portable manuals provide comprehensive instructions on connecting external pointing devices. The following suggestions apply to most portable computers:
 - 1) Install the touchpad on the serial port (most portables have the serial port available for external pointing device connections). Connect only when the power is off.
 - 2) If you already have an external pointing device attached, the touchpad should be connected in place of the other external pointing device.
- ✓ Disable the built-in pointing device. Nearly all laptops allow you to disable their built-in devices. Once this has been done, the touchpad should be the active pointing device.
 - 1) Most portable computers allow only one pointing device to be active.
 - 2) Refer to your portable's user's manual for instructions on disabling the built-in device.

Customer support:

To learn more about operating and customizing your Cirque Smooth Cat, select **START**, **PROGRAMS**, **Cirque Software** and then **Glide Help**. If you need further assistance, please contact Cirque at:

- Web site <http://www.cirque.com>
- E-mail address tech@cirque.com (please remember to use a return e-mail address)
- Toll-free support line 1-888-GLIDE-98; fax line (use outside U.S.) (801)-467-0208

User's Guide © 1998 by Cirque Corporation

The contents of this manual are not intended to and do not constitute a warranty of any sort. Cirque Corporation specifically disclaims any implied warranties of merchantability or fitness or any particular purpose resulting from this manual. Cirque Corporation reserves the right to revise and make changes to this manual (and to the Cirque GlidePoint product and software) from time to time without obligation to notify any person of, or to provide any person with, such revisions or changes. For warranty information, see below.

Cirque and GlidePoint are registered trademarks of Cirque Corporation. All other registered trademarks are the sole property of their respective owners. Any unauthorized copying, duplicating, or other reproduction of the contents hereof is prohibited without written consent from Cirque Corporation.

Software License Agreement:

The enclosed software is being licensed to the original purchaser only on the condition that all of the terms contained in this license agreement are accepted. This is a legal agreement between the original purchaser and Cirque; by opening the product package the purchaser agrees to be bound by the terms and conditions of the agreement. If these terms are not accepted, promptly return the software and all other items that are part of this product in their original package with the original purchase receipt to the point of purchase for a full refund.

Cirque and its suppliers offer a nonexclusive license for use of one (1) copy of the enclosed software program ("Cirque Driver") on one (1) computer only with the Cirque touchpad you have purchased. You may make one (1) copy of the software for backup purposes only; this copy must be labeled with all copyright and other notices included on the software as supplied by Cirque. Installation onto a network server for the purpose of internal distribution of the software is permitted only if each user has purchased an individual software package for each computer to which the software is distributed.

Cirque Corporation and its suppliers retain ownership of all software rights. User shall not decompile, disassemble or modify the software in any way. User may not transfer the software using any means (except as expressly permitted above). User may not transfer the software or touchpad product except upon permanent transfer, provided user does not retain a copy of the software, and provided transferee agrees to be bound by the terms and conditions of this license. Upon any violation of any of the provisions in this agreement, rights to use the software shall terminate and all copies shall be returned to Cirque.

Warranty Information:

Cirque touchpads are warranted to be free from failure due to defects in material and workmanship for as long as they are owned by the original purchaser. Cirque keyboards are warranted to be free from failure due to defects in material and workmanship for one (1) year from the original date of purchase.

For two (2) years from the date of purchase for touchpads and one (1) year from the date of purchase for keyboards, Cirque will, at its sole option, replace or repair at no charge the product which, in its option, is defective. After two (2) years from the date of purchase for touchpads and one (1) year from the date of purchase for keyboards, Cirque will, at its sole option, replace the defective product with a current version with comparable functions and features, or repair the defective product, for a fixed fee based on Cirque's then-current price schedule.

If a defective product has been modified or altered in any way, the plastic enclosure has been opened, or the failure is the result of misuse, abuse, accident, or misapplication, Cirque has no obligation to repair or replace the product.

Customer is responsible for packaging and freight to ship a defective product to Cirque. Cirque is responsible for charges to ship the repaired or replacement product. In the case of charges for which customer is liable, the replacement product will be sent C.O.D. Customer must obtain a Return Merchandise Authorization (RMA) number from Cirque's Customer Service department at **801-467-1100**. This RMA number should be displayed prominently on the outside of the returned package and on the accompanying package list. Cirque is not responsible for packages returned without an RMA number. Warranty claims may not be honored if no product registration card is on file at Cirque Corporation.

HARDWARE, SOFTWARE, AND ACCOMPANYING WRITTEN MATERIALS ARE PROVIDED WITHOUT WARRANTY OF ANY KIND, INCLUDING THE IMPLIED WARRANTIES OF MERCHANTABILITY AND FITNESS FOR A SPECIFIC PURPOSE, EVEN IF CIRQUE HAS BEEN ADVISED OF THAT PURPOSE. IN NO EVENT WILL CIRQUE BE LIABLE FOR ANY DIRECT, INDIRECT, CONSEQUENTIAL, OR INCIDENTAL DAMAGES ARISING FROM THE USE OF OR INABILITY TO USE SUCH PRODUCT, EVEN IF CIRQUE HAS BEEN ADVISED OF THE POSSIBILITY OF SUCH DAMAGES.

FCC Regulatory Notice:

This equipment has been tested and found to comply with the limits for a Class B digital device, pursuant to Part 15 of the FCC Rules. These limits are designed to provide reasonable protection against harmful interference in residential installations.

This equipment generates, uses, and can radiate radio frequency energy and, if not installed and used in accordance with the instructions, may cause harmful interference to radio communications. However, there is no guarantee that interference will not occur in a particular installation.

If this equipment does cause harmful interference to radio or television reception, which can be determined by turning the equipment off and on, the user is encouraged to try to correct the interference by one or more of the following measures:

- Reorient or relocate the receiving antenna
- Increase the separation between the equipment and the receiver
- Connect the equipment to an outlet on a circuit different from that to which the receiver is connected

Changes or modifications not expressly approved by the party responsible for compliance can void the user's authority to operate the equipment. This product is equipped with a shielded cable. Extension cables, if used, must be shielded in order to comply with the emission limits. Operation of this device is subject to the following conditions: (1) This device may not cause harmful interference, and (2) this device must accept any interference received, including interference that may cause undesired operation.

FCC ID:

Cirque Smooth Cat™ LG8CC0003 (GKB380)

